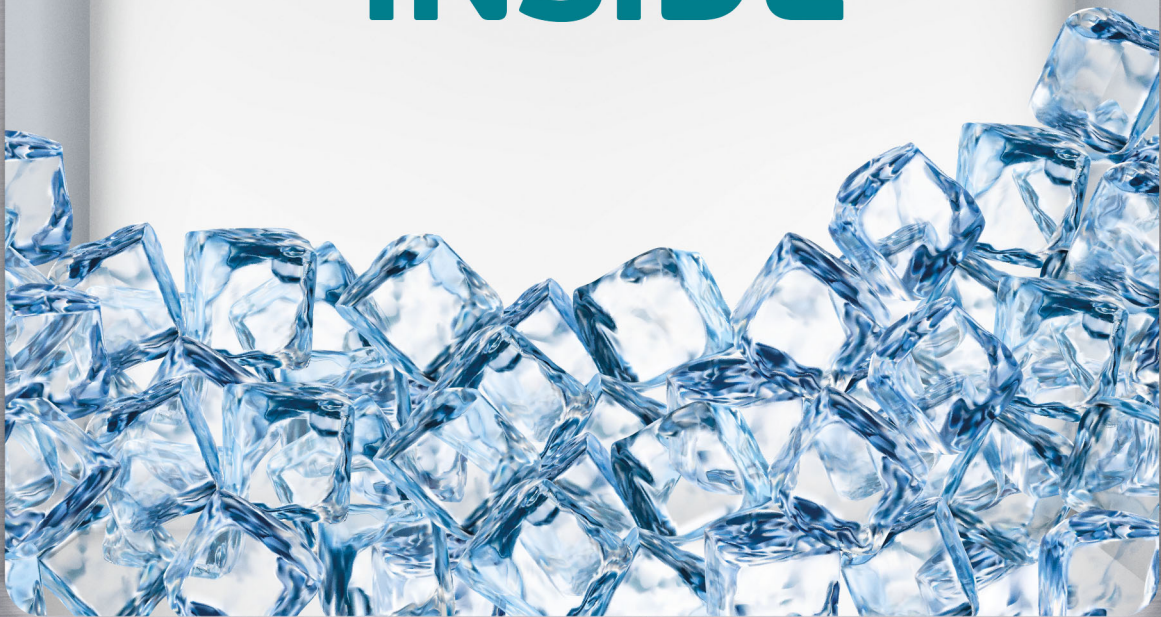



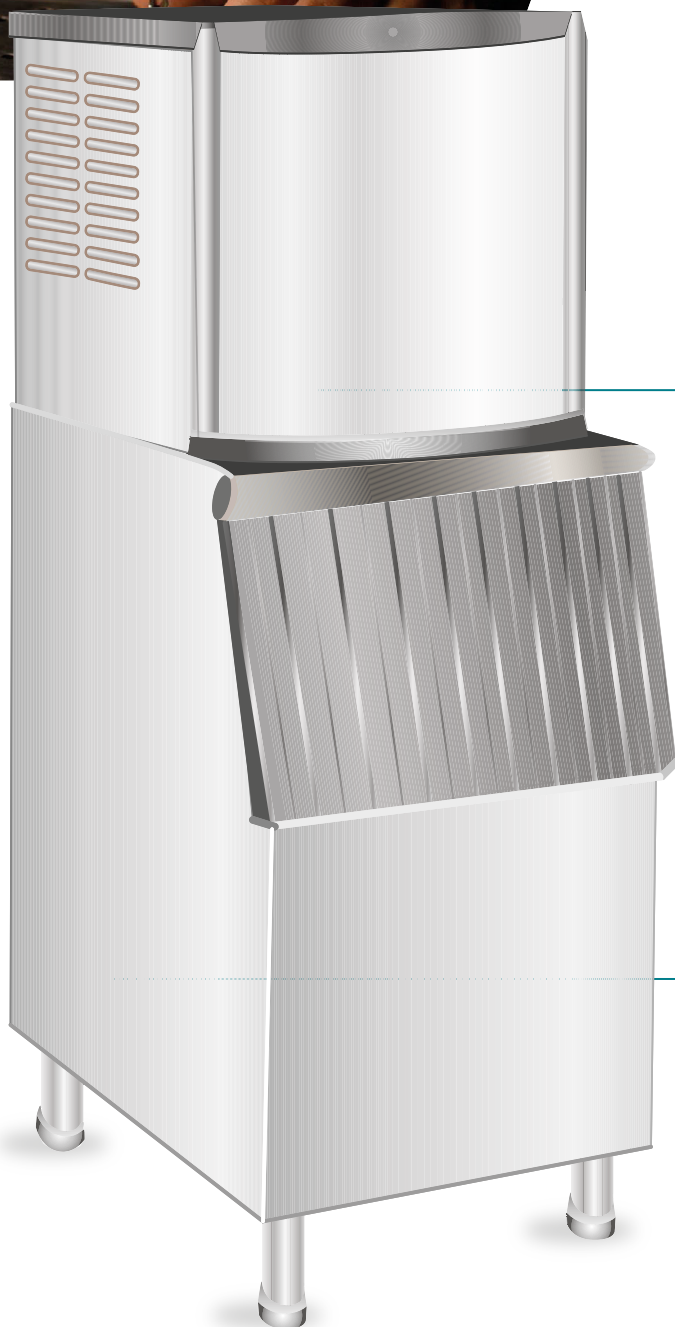
REFRESH THE FUTURE

**WITH  
EMBRACO  
INSIDE**





# LOWER ENERGY CONSUMPTION, **HIGHER ICE PRODUCTION**



**Test conditions:**  
90/70 Fahrenheit  
70/50 Fahrenheit

Single door  
Undercounter  
Ice Maker  
115-127V 60Hz

**External Dimension**  
(in) 26 X 28 X 38.5  
(in) 30 X 28 X 38.5

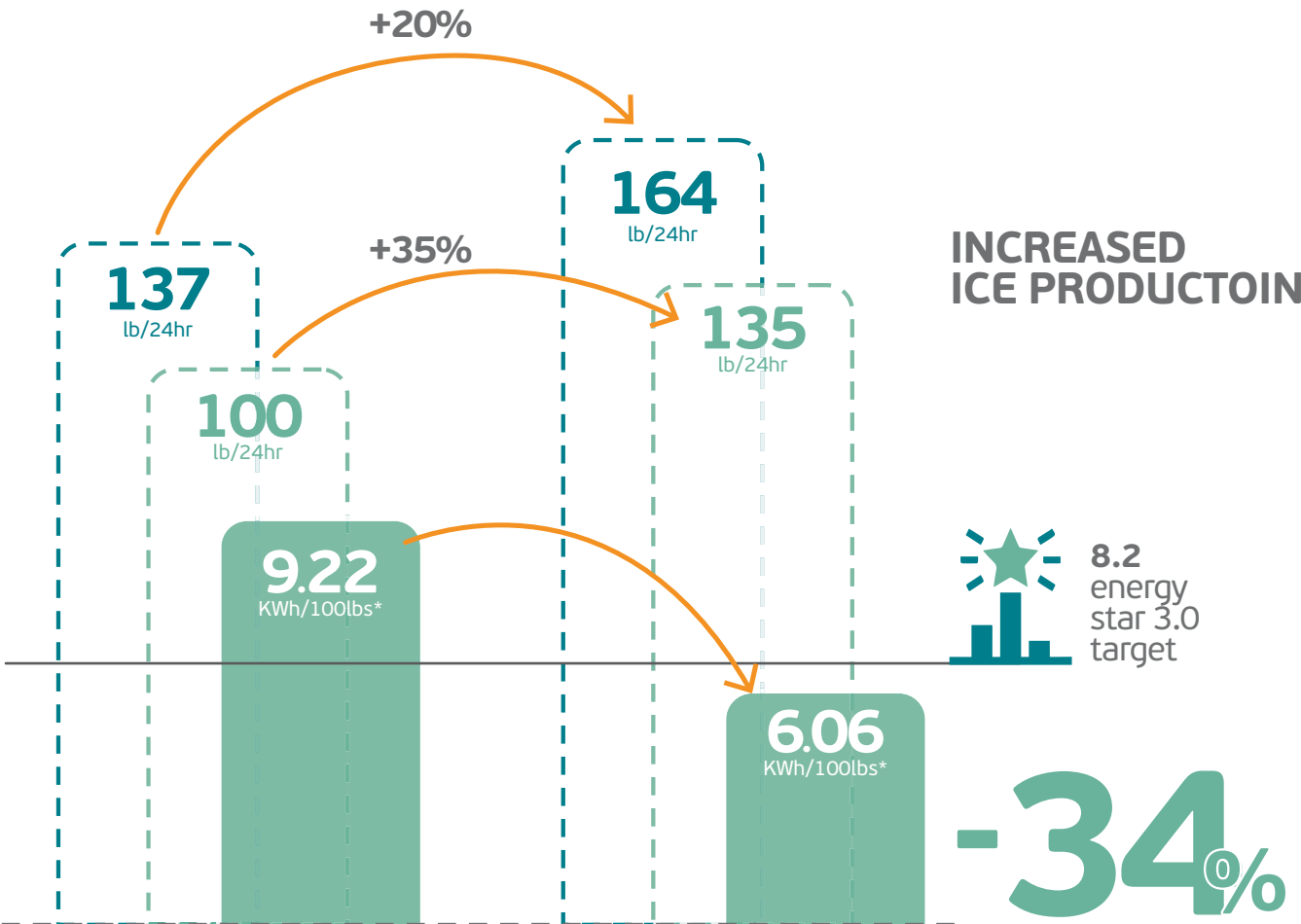
\*Image is not representative  
of final product



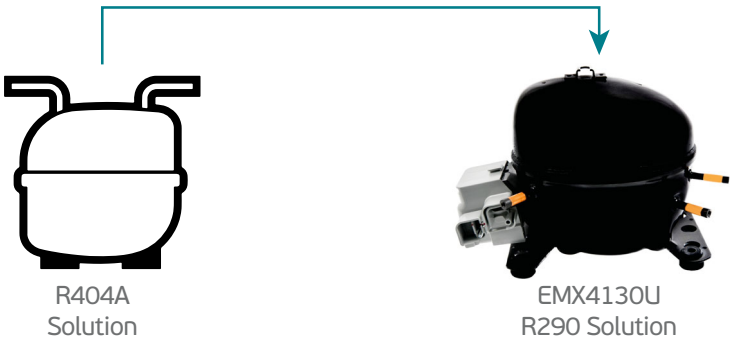
READY FOR THE NEW  
ENERGY STAR 3.0  
EFFICIENCY TARGET  
FOR ICEMACHINES.



NATURAL  
REFRIGERANT FOR  
SUSTAINABILITY.



\*Energy consumption in 24h



Test Condition: 70/50°F (Commercial Condition)  
Test Condition: 90/70°F (Condition of E-star 3.0 rating)

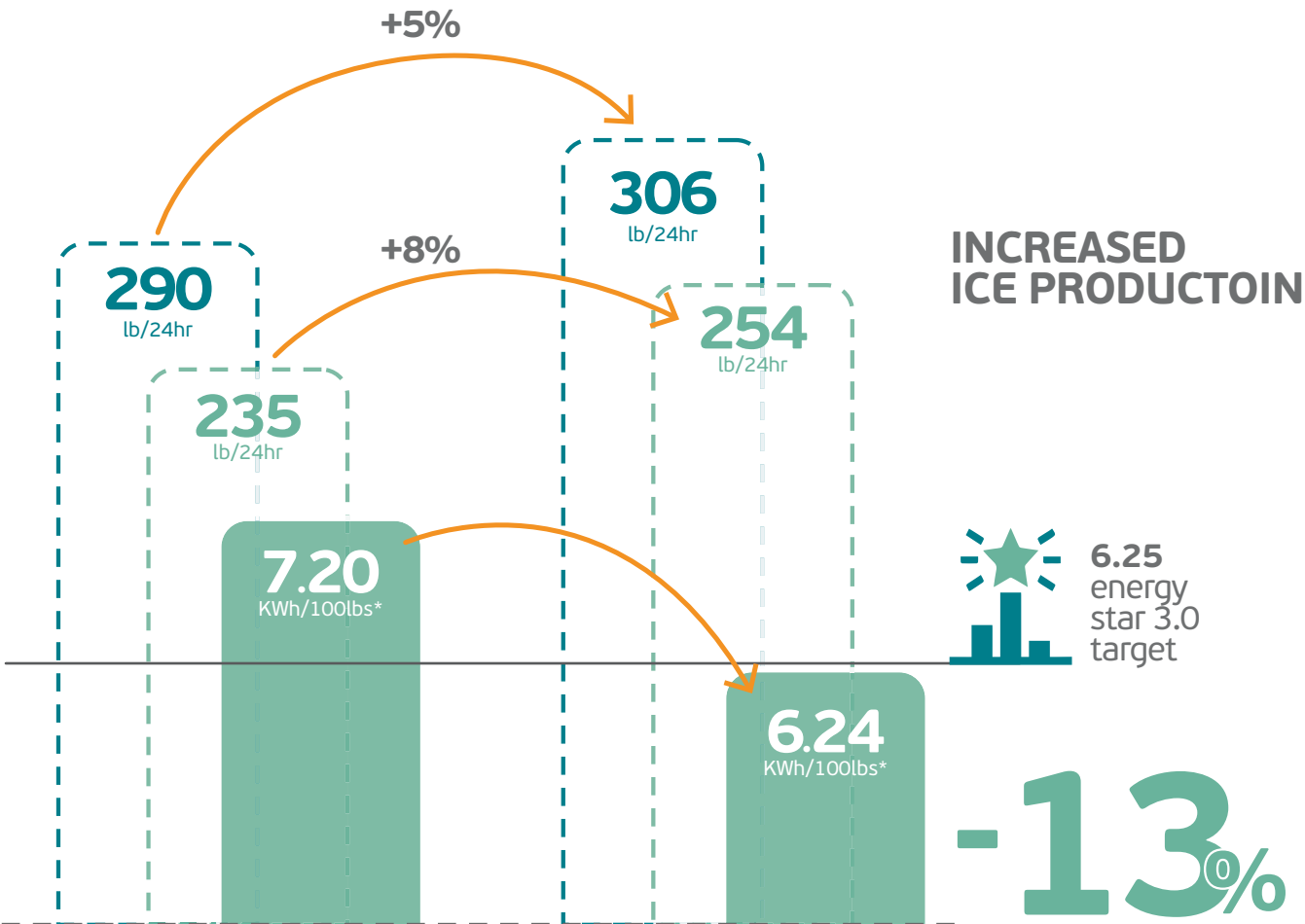
ICE MACHINE CASE STUDY

embraco  
Nidec

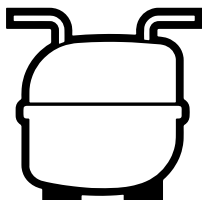
READY FOR THE NEW  
ENERGY STAR 3.0  
EFFICIENCY TARGET  
FOR ICEMACHINES.



NATURAL  
REFRIGERANT FOR  
SUSTAINABILITY.



\*Energy consumption in 24h



R404A  
Solution



NEX4160UA  
R290 Solution

Test Condition: 70/50°F (Commercial Condition)  
Test Condition: 90/70°F (Condition of E-star 3.0 rating)

ICE MACHINE CASE STUDY

embraco  
Nidec

Follow this QRcode



to know more about  
Embraco products

embraco  
*Nidec*