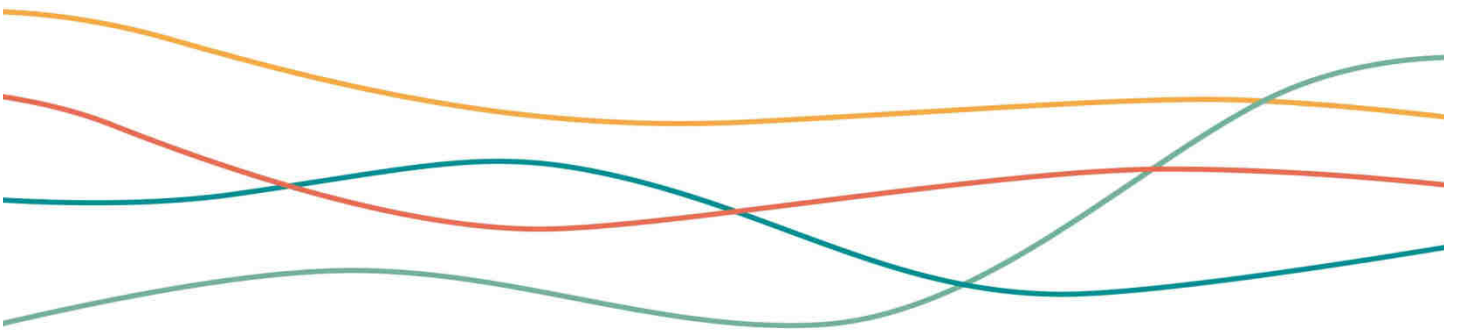




NE FAMILY PHASE OUT



embraco

www.embraco.com

NE improvements

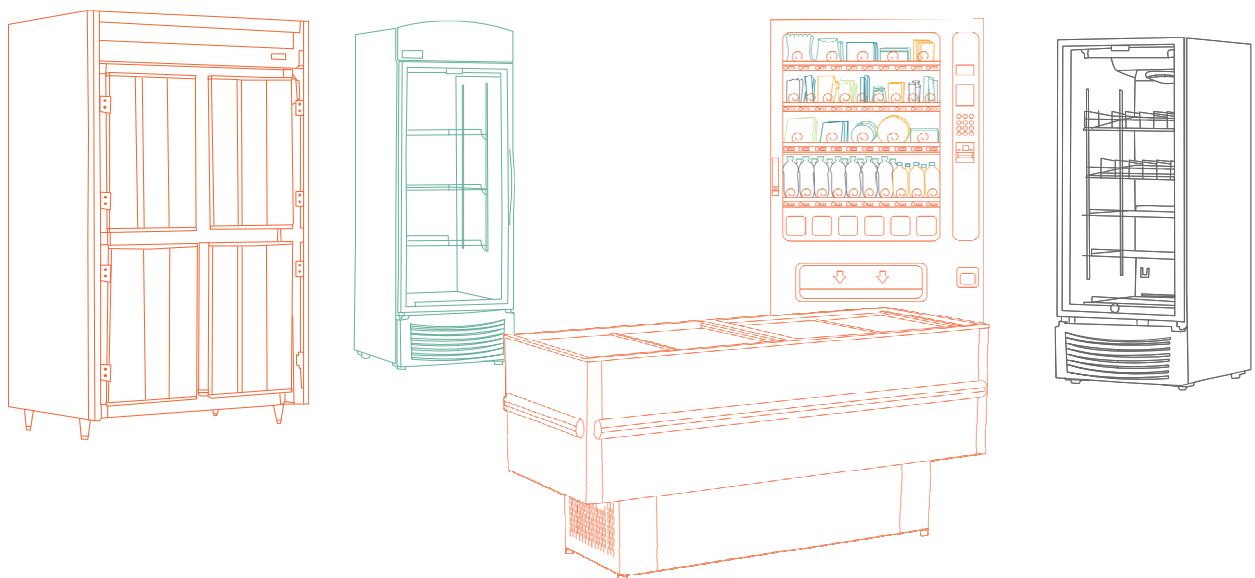
Many years of NE compressors sales has proven its success on refrigeration market.

However, continuous improvement of the product portfolio, towards better efficiency and platform simplification is bringing new products and therefore by the end of 2016 NE family will be completely replaced by other platforms.

With aim to continue with this successful compressor and follow requirements of the market for higher efficiency and natural refrigerant solution HC, NE platform will be completely replaced by **NEK/NEU** platform. These are bringing higher performance and efficiency, keeping noise and pulsation in NEK level to work in severe field conditions.

LBP 134a models are excluded from this process due to different internal/mechanical structure of compressor, which is already standardized towards NEK family. To ease transition for new products find Cross-Reference tables in the attached document.

NEK/NEU platforms fit most of the commercial applications.



Test Conditions

Temperature	Ashrae Conditions for NE/NEK/NEU/EMT models	
	LBP °C	M/HBP °C
Evaporating	-23,3	7,2
Condensing	54,4	54,4
Gas Return	32,2	35
Ambient	32,2	35
Subcooling	22,2 K	8,3 K

Temperature	Ashrae Conditions for FF models	
	LBP °C	M/HBP °C
Evaporating	-23,3	7,2
Condensing	54,4	54,4
Gas Return	32,2	32,2
Ambient	32,2	32,2
Subcooling	22,2 K	22,2 K

Refrigerant	Application
R-422D	LBP

Current NE model

Model	SKU	Voltage/ Frequency	Motor Type	Ashrae Cooling Cap. [W]	Ashrae EER [W/h]	Displ.
NE2125E	261IA	220-240V 50HZ	CSIR	294	1,05	8,78
	263AA			429	1,10	
NE2134E	263AG	115V 60HZ		513	1,09	12,12
	263AD	208-230V 60HZ		514	1,10	

Possible alternative replacement

Model	SKU	Voltage/ Frequency	Motor Type	Ashrae Cooling Cap. [W]	Ashrae EER [W/h]	Displ.
EMT2125GK	912DA	220-240V 50HZ	CSIR	351	1,40	5,96
NEK2125GK	957EA			341	1,22	6,20
NEU2140GK	958JA			486	1,36	8,78
NEK2134GK	958AA	464		1,30		
NEU2140GK	958JE	115-127V 60HZ	564	1,34		
NEK2134GK	958AE		571	1,32		
NEU2140GK	958KB	200-230V 50Hz/ 208-230V 60Hz	568	1,36		
NEK2134GK	959DD	208-230V 60HZ	544	1,30		

Refrigerant	Application
R-422D	M/HBP

Current NE model

Model	SKU	Voltage/ Frequency	Motor Type	Ashrae Cooling Cap. [W]	Ashrae EER [W/h]	Displ.
NE6181E	262LA	220-240V 50HZ	CSIR	956	2,31	7,28
	262LD	208-230V 60HZ		1156	2,26	
	262LG	115V 60HZ		1156	2,26	

NE6210E	261NA	220-240V 50HZ	CSIR	1120	2,10	8,78
	261NG	115V 60HZ		1356	2,01	

NE6211E	262HA	220-240V 50HZ	CSIR	1290	2,13	10
	263GG	115V 60HZ		1567	2,01	
	262HD	208-230V 60HZ		1593	2,16	

NE9213E	263EA	220-240V 50HZ	CSR	1620	2,40	12,12
	263EG	115V 60HZ		1930	2,19	
	263ED	208-230V 60HZ		1940	2,25	

Possible alternative replacement

Model	SKU	Voltage/ Frequency	Motor Type	Ashrae Cooling Cap. [W]	Ashrae EER [W/h]	Displ.
NEK6181GK	957MA	220-240V 50HZ	CSIR	1089	2,12	7,28
	957MD	208-230V 60HZ		1290	2,07	
	957MG	115V 60HZ		1247	2,01	

NEU6210GK	958IA	220-240V 50HZ	CSIR	1153	2,30	7,28
NEK6210GK	958CA			1304	2,07	8,78
NEU6210GK	958IE	115-127V 60HZ	CSIR	1428	2,38	7,28
NEK6210GK	958CG	115V 60HZ	CSIR	1569	2,07	8,78

NEU6212GK	958HA	220-240V 50HZ	CSIR	1438	2,23	8,78
NEK6210GK	958CA			1304	2,07	
NEU6212GK	958HE	115-127V 60HZ	CSIR	1676	2,19	
NEK6210GK	958CE		CSIR	1569	2,07	
NEU6212GK	958HD	208-230V 60HZ	CSIR	1678	2,18	
NEK6210GK	959ID		CSIR	1540	2,10	

NEU6215GK	959NA	220-240V 50HZ	CSIR	1862	1,92	12,12
NEK6213GK	959BA			1761	1,85	
NEU6215GK	959NE	115-127V 60HZ	CSIR	2209	1,86	
	959ND	208-230V 60HZ	CSIR	2243	1,96	

Refrigerant	Application
R-134a	HBP

Current NE model

Model	SKU	Voltage/ Frequency	Motor Type	Ashrae Cooling Cap. [W]	Ashrae EER [W/h]	Displ.
NE5160Z	261AA	220-240V 50HZ	RSIR	688	2,30	8,00
	261AN	200-240V 50HZ/ 230V 60HZ		702	2,30	
	261AG	115V 60HZ		837	2,24	

NE5170Z	261CA	220-240V 50HZ	RSIR	801	2,32	8,78
	261AG	115V 60HZ		961	2,29	

NE5187Z	261EA	220-240V 50HZ	RSIR	1089	2,09	12,12
	262QN	200-240V 50HZ/ 230V 60HZ		1111	2,24	
	261EG	115V 60HZ		1281	2,08	

NE6160Z	261BA	220-240V 50HZ	CSIR	688	2,30	8,00
	261BN	200-240V 50HZ/ 230V 60HZ		700	2,31	
	261BG	115V 60HZ		837	2,24	

Possible alternative replacement

Model	SKU	Voltage/ Frequency	Motor Type	Ashrae Cooling Cap. [W]	Ashrae EER [W/h]	Displ.
EMT6160Z	194QA	220-240V 50HZ	CSIR	720	2,40	6,76
NEK6160Z	267BA		CSIR	716	2,41	7,28
	267BB	200-230V 50HZ/ 208-230V 60HZ	717	2,41		
	267BG	115V 60HZ	845	2,35		

EMT6170Z	194RA	220-240V 50HZ	CSIR	806	2,26	7,69
NEK6170Z	267DA		CSIR	837	2,41	8,4
	267DG	115V 60HZ	978	2,34		

NEU6210Z	268HA	220-240V 50HZ	CSIR	1231	2,37	12,12
NEK6210Z	268BA			1129	2,29	
FFI12HBX	-			1269	2,54	11,14
NEU6187Z	267JN	200-240V 50HZ/ 230V 60Hz	CSIR	1018	2,44	10,00
NEK6210Z	269EB	200-230V 50HZ/ 208-230V 60HZ		1105	2,13	
NEU6187Z	268IE	115-127V 60HZ		1211	2,42	
NEK6210Z	268BG	115V 60HZ		1326	2,18	12,12
FFI12HBX	-	115-127V 60HZ		1553	2,54	11,14

EMT6160Z	194QA	220-240V 50HZ	CSIR	720	2,40	6,76
NEK6160Z	267BA		CSIR	716	2,41	7,28
	267BB	200-230V 50HZ/ 208-230V 60HZ	717	2,41		
	267BG	115V 60HZ	845	2,35		

Refrigerant	Application
R-134a	HBP

Current NE model

Model	SKU	Voltage/ Frequency	Motor Type	Ashrae Cooling Cap. [W]	Ashrae EER [W/h]	Displ.
NE6170Z	261DA	220-240V 50HZ	CSIR	789	2,32	8,78
	262RN	200-240V 50HZ/ 230V 60HZ		789	2,32	
	261DG	115V 60HZ		944	2,26	
	261DD	208-230V 60HZ		967	2,31	

NE6187R	261GG	115V 60HZ	CSIR	1281	2,08	12,12
----------------	-------	-----------	------	------	------	-------

NE6187Z	261FA	220-240V 50HZ	CSIR	1089	2,09	12,12
	262EN	200-240V 50HZ/ 230V 60HZ		1104	2,30	
	261FD	208-230V 60HZ		1278	2,08	
	261FG	115V 60HZ		1278	2,08	

NE6210Z	262FA	220-240V 50HZ	CSIR	1240	2,24	13,54
	262FD	208-230V 60HZ		1445	2,12	
	262FG	115V 60HZ		1449	2,11	

Possible alternative replacement

Model	SKU	Voltage/ Frequency	Motor Type	Ashrae Cooling Cap. [W]	Ashrae EER [W/h]	Displ.
EMT6170Z	194RA	220-240V 50HZ	CSIR	806	2,26	7,69
NEK6170Z	267DA		CSIR	837	2,41	8,40
	268DB	200-230V 50HZ/ 208-230V 60HZ	841	2,44		
	267DG	115V 60HZ	978	2,34		
FF10HBK	-	115-127 V 60 Hz	RSIR/ CSIR	1034	2,24	9,04
NEK6170Z	268DB	200-230V 50HZ/ 208-230V 60HZ	CSIR	981	2,38	8,40

NEU6187R	-	115-127V 60HZ	UD	UD	UD	10
-----------------	---	---------------	----	----	----	----

NEU6210Z	268HA	220-240V 50HZ	CSIR	1231	2,37	12,12
NEK6210Z	268BA			1129	2,29	
FFI12HBX	-			1269	2,54	
NEU6187Z	267JN	200-240V 50HZ/ 230V 60Hz	CSIR	1018	2,44	10,00
NEK6187Z	269BB	200-230V 50HZ/ 208-230V 60HZ		965	2,39	
NEK6210Z	269AB	1267		2,10		
NEU6187Z	268IE	115-127V 60HZ	CSIR	1211	2,42	10,00
NEK6187Z	268AG	115V 60HZ		1122	2,31	
FFI12HBX	-	115-127 V 60 Hz		1553	2,54	

NEU6210Z	268HA	220-240V 50HZ	CSIR	1231	2,37	12,12
NEK6212Z	269AA			1314	2,09	14,30
FFI12HBX	-			1269	2,54	11,14
NEU6212Z	269MB	200-230V 50HZ/ 208-230V 60HZ	CSR	1659	2,19	14,30
NEK6212Z	269AB			1474	1,97	
NEU6212Z	269ME	115-127V 60HZ	CSIR	1663	2,23	
NEK6212Z	269AG	115V 60HZ/ 100V 50HZ		1517	1,98	
FFI12HBX	-	115-127V 60HZ	1553	2,54	11,14	

Refrigerant	Application
R-134a	AC

Current NE model – Heat pump	TESTING CONDITION Condensing temperature 55°C Evaporating temperature 23°C
------------------------------	--

Possible alternative replacement

Model	SKU	Voltage/ Frequency	Motor Type	Ashrae Cooling Cap. [W]	Ashrae EER [W/h]	Displ.
NE7215H	264GA	220-240V 50HZ	PSC	2	2,24	13,54

Model	SKU	Voltage/ Frequency	Motor Type	Ashrae Cooling Cap. [W]	Ashrae EER [W/h]	Displ.
NEU7215H	-	UD	UD	UD	UD	UD

Refrigerant	Application
R-404A	LBP

Current NE model

Possible alternative replacement

Model	SKU	Voltage/ Frequency	Motor Type	Ashrae Cooling Cap. [W]	Ashrae EER [W/h]	Displ.
NE2125GK	951IA	220-240V 50HZ	CSIR	340	1,08	8,78
	951ID	208-230V 60HZ		364	1,06	
	951IG	115V 60HZ		365	1,06	
NE2134GK	953AA	220-240V 50HZ		477	1,23	12,12
	953AD	208-230V 60HZ		544	1,25	
	952AG	115V 60HZ/ 100V 50HZ		555	1,21	

Model	SKU	Voltage/ Frequency	Motor Type	Ashrae Cooling Cap. [W]	Ashrae EER [W/h]	Displ.
EMT2125GK	912DA	220-240V 50HZ	CSIR	351	1,40	5,96
NEK2125GK	957EA			341	1,22	6,20
NEK2134GK	959DD	208-230V 60HZ		544	1,30	8,78
NEK2125GK	957EG	115V 60HZ		427	1,32	6,20
NEU2140GK	958JA	220-240V 50HZ		486	1,36	8,78
NEK2134GK	958AA			464	1,30	
NEU2140GK	958KB	200-230V 50Hz/ 208-230V 60Hz	568	1,36		
NEK2134GK	959DD	208-230V 60HZ	544	1,30		
NEU2140GK	958JE	115-127V 60HZ	564	1,34		
NEK2134GK	958AG	115V 60HZ	571	1,32		

Refrigerant	Application
R-404A	M/HBP

Current NE model

Model	SKU	Voltage/ Frequency	Motor Type	Ashrae Cooling Cap. [W]	Ashrae EER [W/h]	Displ.
NE6181GK	952LA	220-240V 50HZ	CSIR	1004	2,18	7,28
	952LN	200-240V 50HZ/ 230V 60HZ		1025	2,19	
	952LG	115V 60HZ		1246	2,14	
NE6210GK	951NA	220-240V 50HZ		1173	1,98	8,78
	951ND	208-230V 60HZ		1441	1,93	
	951NG	115V 60HZ		1470	2,00	
NE9213GK	953EA	220-240V 50HZ	CSR	1732	2,26	12,12
	953ED	208-230V 60HZ		2021	1,97	
	953EG	115V 60HZ		2021	2,06	
	953EE	115-127V 60HZ		2021	2,06	

Possible alternative replacement

Model	SKU	Voltage/ Frequency	Motor Type	Ashrae Cooling Cap. [W]	Ashrae EER [W/h]	Displ.
NEU6210GK	958IA	220-240V 50HZ	CSIR	1153	2,30	7,28
NEK6181GK	957MA			1089	2,12	
NEU6210GK	958IA	220-240V 50HZ		1153	2,30	
NEK6181GK	957MA	220-240V 50HZ		1089	2,12	
	957MD	208-230V 60HZ		1290	2,07	
NEK6181GK	957MG	115V 60HZ		1247	2,01	
NEU6212GK	958HA	220-240V 50HZ	CSIR	1438	2,23	8,78
NEK6210GK	958CA			1304	2,07	
NEU6212GK	958HD	208-230V 60HZ		1678	2,18	
NEK6210GK	959ID	208-230V 60HZ	1540	2,10		
NEU6212GK	958HE	115-127V 60HZ	1676	2,19		
NEK6210GK	958CG	115V 60HZ	1569	2,07		
NEU6215GK	959NA	220-240V 50HZ	CSIR	1862	1,92	12,12
NEK6213GK	959BA			1761	1,85	
NEU6215GK	959ND	208-230V 60HZ	CSR	2303	2,19	12,12
	959NE	115-127V 60HZ	CSIR	2280	2,18	

Refrigerant	Application
R-407C	AC

Current NE model

Model	SKU	Voltage/ Frequency	Motor Type	Ashrae Cooling Cap. [W]	Ashrae EER [W/h]	Displ.
NE7213GF	954CA	220-240V 50HZ	PSC	1636	2,46	12,12
NE7215GF	954DA			1786	2,38	13,54

Possible alternative replacement

Model	SKU	Voltage/ Frequency	Motor Type	Ashrae Cooling Cap. [W]	Ashrae EER [W/h]	Displ.
NEU6212GK	958HA	220-240V 50HZ	CSIR	1438	2,23	8,78
NEU6215GK	959NA			1862	1,92	12,12

Technical comparison table with the list of impacted condensing units:

Refrigerant	Application
R-134a	HBP

Current NE model

Possible alternative replacement

Model	SKU	Voltage/ Frequency
UNE6170Z	571DA8108AA	220-240V 50Hz
	571DA8208AA	
	571DA8212AA	
	571DG	115V 60Hz
UNE6187Z	571FA5312AA	220-240V 50Hz
	571FA8112AA	
	571FA8212AA	
	571FA9012AA	
	571FA	115V 60Hz
	571FG	200-240V 50Hz
	571FN	200-240V 50Hz
UNE6210Z	572FA5312AA	200-240V 50Hz
	572FA8212AA	200-240V 50Hz
	572FD	208-230V 60Hz

Model	SKU	Voltage/ Frequency
UNEK6170Z	573DA5108AA	220-240V 50Hz
UEMT6170Z	594RA5112AA	
UNEK6170Z	573DA5212AA	
UEMT6170Z	594RA5212AA	
TBD	TBD	TBD
UNEK6187Z	557AA5312AA	220-240V 50Hz
	557AA5112AA	
	557AA5212AA	
UNEK6210Z	558BA9012AA	
TBD	TBD	
TBD	TBD	TBD
TBD	TBD	TBD
UNEK6210Z	558BA5312AA	200-240V 50Hz
	558BA8212AA	
TBD	TBD	TBD

Refrigerant	Application
R-422D	M/HBP

Current NE model

Possible alternative replacement

Model	SKU	Voltage/ Frequency
UNE6181E	672LA8212AA	220-240V 50Hz
UNE6210E	671NA8212AA	
UNE9213E	673EA8204AA	
	673EA8304AA	

Model	SKU	Voltage/ Frequency
UNEK6181GK	557MA8212AA	220-240V 50Hz
UNEK6210GK	674CA8212AA	
UNEU6210GK	668IA8212AA	
UNEK6213GK	659BA8212AA	
	659BA8312AA	

Refrigerant	Application
R-404A	LBP

Current NE model

Model	SKU	Voltage/ Frequency
UNE2125GK	671TA5312AA	220-240V 50Hz
	671TD9901AA	208-230V 60Hz
UNE2134GK	673TA8212AA	220-240V 50Hz
	673TG5201AA	115V 60Hz

Possible alternative replacement

Model	SKU	Voltage/ Frequency
UNEK2125GK	657EA5312AA	220-240V 50Hz
UEMT2125GK	692DA5312AA	
TBD	TBD	TBD
UNEK2134GK	558AA8212AA	220-240V 50Hz
TBD	TBD	TBD

Refrigerant	Application
R-404A	M/HBP

Current NE model

Model	SKU	Voltage/ Frequency
UNE6181GK	672UA5312AA	220-240V 50Hz
	672UA5212AA	
	672UA8212AA	
	672UA8512AA	
	672UA9412AA	
	672UA9512AA	
	672UA9612AA	115V 60Hz
UNE6210GK	671YA5312AA	220-240V 50Hz
	671YA8208AA	
	671YA8212AA	
	671YA9512AA	
	671YG9612AA	115V 60Hz
UNE9213GK	673XA5304AA	220-240V 50Hz
	673XA8204AA	
	673XA8210AA	
	673XA8604AA	
	673XA9504AA	

Possible alternative replacement

Model	SKU	Voltage/ Frequency
UNEK6181GK	557MA5312AA	220-240V 50Hz
	557MA8212AA	
TBD	TBD	TBD
UNEK6210GK	668IA9212AA	220-240V 50Hz
TBD	TBD	
UNEK6210GK	674CA9612AA	TBD
TBD	TBD	
UNEK6210GK	674CA8312AA	220-240V 50Hz
	674CA8212AA	
TBD	TBD	TBD
TBD	TBD	TBD
UNEK6213GK	659BA8312AA	220-240V 50Hz
	659BA8212AA	
	659BA8612AA	
TBD	TBD	TBD